

# Overview: Understanding the gut microbiome

What it is, how it works, and why it matters  
in clinical care and how to interpret it.



# What is the gut microbiome

The gut microbiome is the community of microorganisms, together with their genes and metabolic functions, that live in the gastrointestinal tract. While microbes exist across multiple body sites, the gut microbiome is the most extensively studied because of its density, diversity and metabolic activity.

The gut microbiome is best understood as an ecosystem: a living community of many different microbes that interact with each other and with the human body.



**The gut microbiome is a measurable biological system**

The gut microbiome is a dynamic biological system that is essential to normal human physiology, influencing immune regulation, gut barrier integrity, metabolism, and systemic signaling.<sup>1</sup> It is a clinically relevant biological system with meaningful implications for complex and multi-system presentations.

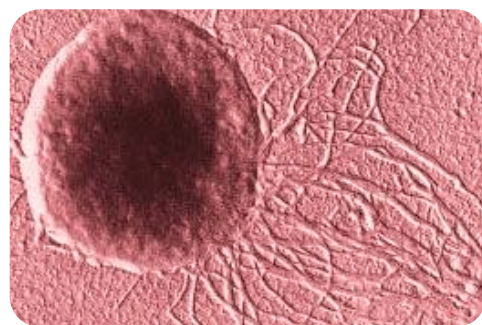
## The gut microbiome is composed of diverse microbial communities

The gut microbiome is a diverse community of microorganisms that actively shape gut function through metabolism, competition, and interactions with the immune system and gut lining.

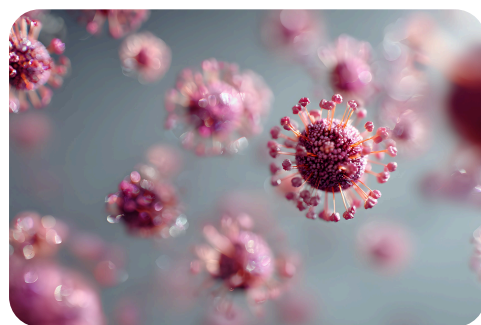
This community includes:



**BACTERIA**



**ARCHAEA**



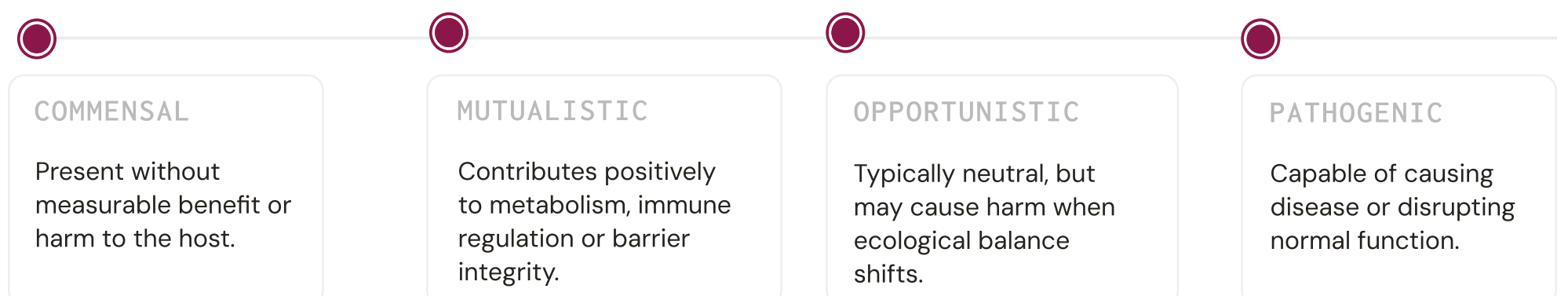
**VIRUSES**



**FUNGI**

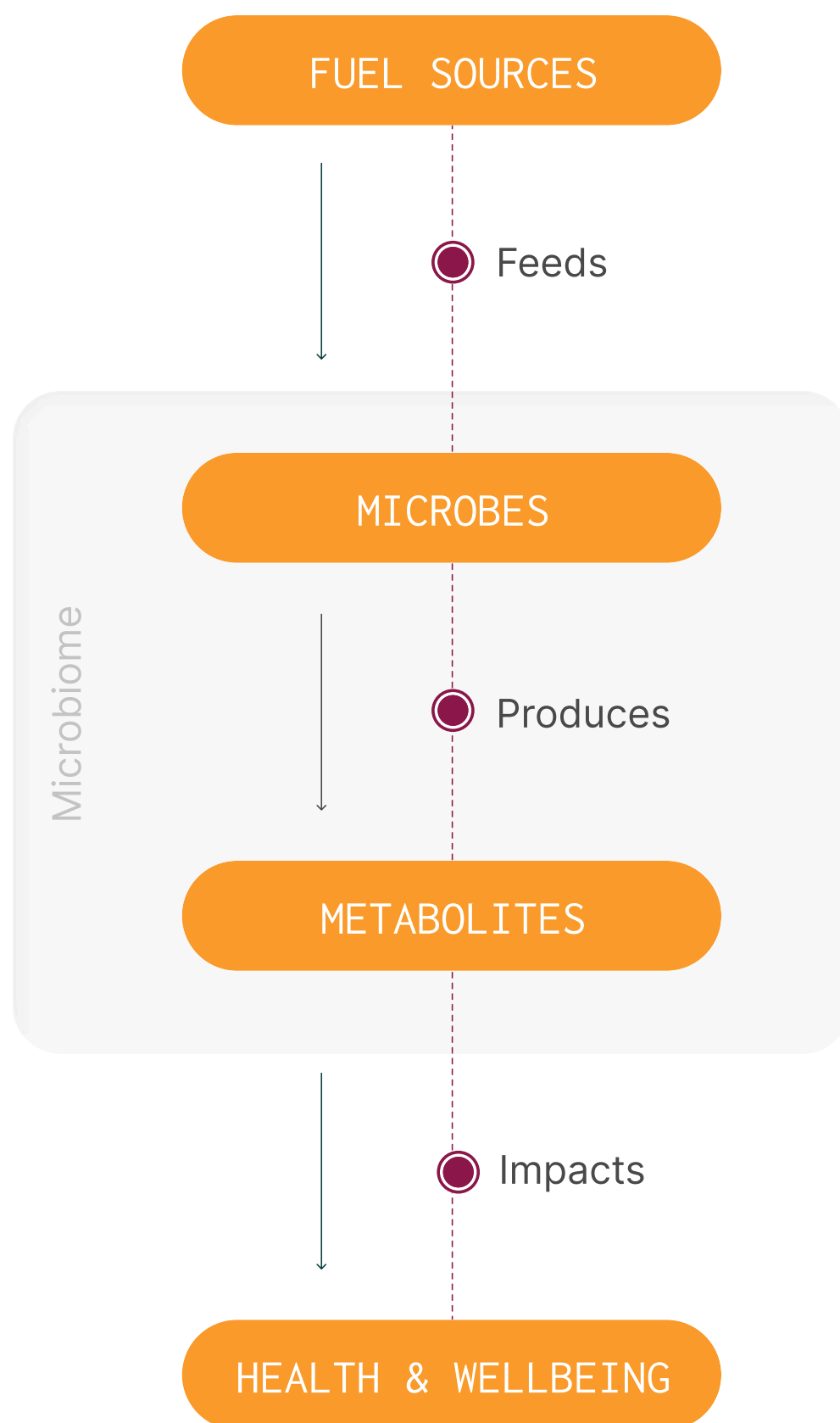
## The healthy function of the microbiome depends on a balanced ecosystem

The nature of these interactions is not fixed, it depends on the gut environment and overall ecological balance. These interactions generally fall into four categories



## Microbes convert fuel into compounds that influence health

Gut microbes feed on available substrates including dietary fibre, proteins and host-derived compounds and convert them into metabolites that interact with body systems.<sup>1,2</sup> What they produce depends on which microbes are present, the functional pathways they carry, and the fuel sources available to them.



# Key helpful functions of the gut microbiome

Microbes influence human physiology through the compounds they produce and the signals they generate. These microbial metabolites interact with immune pathways, support gut barrier integrity, and contribute to broader metabolic regulation.<sup>1,3</sup>

## Metabolism

Microbial metabolites influence energy use, lipid processing and systemic metabolic balance

## Immune regulation

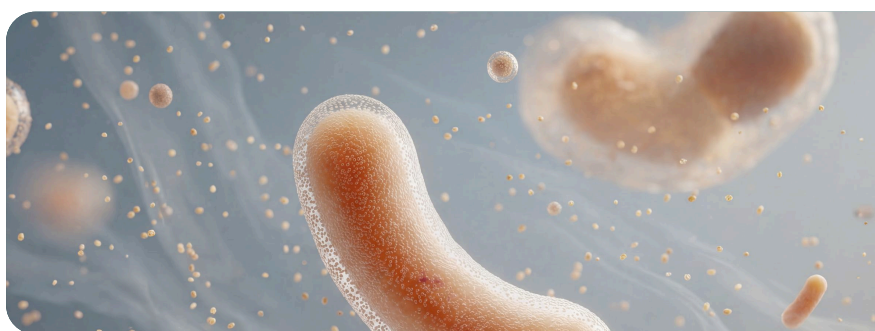
The gut microbiome helps regulate immune responses and maintain immune balance

## Gut barrier function

Microbial activity supports epithelial integrity

## Systemic signalling

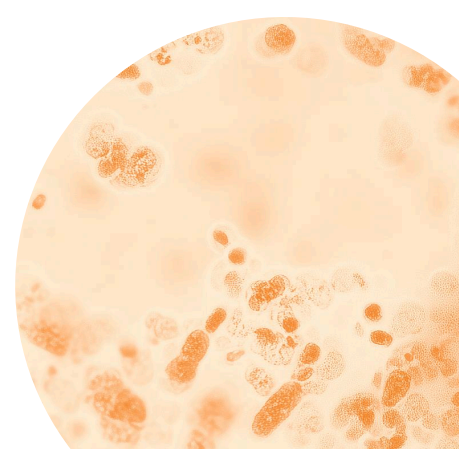
Microbial activity supports epithelial integrity



The microbiome functions as part of human biology — not separate from it.

## It's not enough to know which microbes are present, you need to know what the ecosystem is doing

Microbiome species vary widely between individuals, yet different species can produce the same essential metabolites. Two people with very different microbial profiles may share comparable functional output.<sup>4-6</sup> This is why clinical insight increasingly focuses on metabolic activity, such as butyrate production, rather than species detection alone.



# Microbiome insight adds a systems-level lens to clinical care.

The microbiome interacts with multiple biological systems simultaneously, it can provide additional interpretive insight in chronic and complex cases. In multi-system presentations not fully explained by traditional markers, understanding microbial function adds a broader systems-level perspective.

## ECOLOGICAL BALANCE

A healthy microbiome is not defined by the presence of specific organisms, but by the balance and diversity of the community as a whole. Disruptions to this balance can shift microbial interactions from beneficial to opportunistic.<sup>1</sup>

---

## FUNCTIONAL PATHWAYS

Two individuals may have very different microbial species yet share similar functional outputs – such as butyrate production or mucin degradation.<sup>4-6</sup> Assessing what microbes are doing metabolically often provides more meaningful insight than species detection alone.

---

## METABOLIC OUTPUT

Microbial metabolites interact with body tissues, influencing immune regulation, barrier integrity, metabolism and systemic signalling.<sup>1</sup> What is produced depends on the microbes present, the functional pathways they carry, and the fuel sources available to them.

---

## PATIENT CONTEXT

The same microbial profile can produce different clinical effects depending on individual factors. Many factors including diet, medication use, immune function, and gut barrier integrity can all shape how the microbiome behaves and what it means for that patient.

---



# Key Takeaway

The human microbiome is a measurable biological system that functions as part of normal human physiology.

Community-wide measures such as diversity and functional output can be more clinically meaningful than detection of specific species.

As understanding of the microbiome grows, it is becoming an increasingly valuable part of clinical assessment, especially in chronic or multi-system presentations.



1. Sender R, Fuchs S, & Milo R. Revised Estimates for the Number of Human and Bacteria Cells in the Body. *PLoS Biology* 14 e1002533 (2016).
2. Huttenhower C, et al. Structure function and diversity of the healthy human microbiome. *Nature* 486 207–214 (2012).
3. Jiang Y, Che L, & Li S. C. Deciphering the personalized functional redundancy hierarchy in the gut microbiome. *Microbiome* 14 17 (2025).
4. Fan Y, & Pedersen O. Gut microbiota in human metabolic health and disease. *Nat. Rev. Microbiol.* 19 55–71 (2021).
5. Lynch S. V. & Pedersen O. The human intestinal microbiome in health and disease. *N. Engl. J. Med.* 375 2369–2379 (2016).
6. Koh A, DeVadder F, Kovatcheva-Datchary P, & Bäckhed F. From Dietary Fiber to Host Physiology: Short-Chain Fatty Acids as Key Bacterial Metabolites. *Cell* 165 1332–1345 (2016).
7. Zhernakova A, et al. Population-based metagenomics analysis reveals markers for gut microbiome composition and diversity. *Science* 352 565–569 (2016).
8. De Filippis F, et al. Distinct genetic and functional traits of human intestinal *Prevotellacopri* strains are associated with different habitual diets. *Cell Host Microbe* 25 444–453 (2019).
9. Zhang Z. J, et al. Comprehensive analyses of a large human gut *Bacteroidales* culture collection reveal species- and strain-level diversity and evolution. *Cell Host Microbe* 32 1853–1867 (2024).
10. Tian L, et al. Deciphering functional redundancy in the human microbiome. *Nat Commun* 11 6217 (2020).
11. den Besten G, et al. The role of short-chain fatty acids in the interplay between diet, gut microbiota and host energy metabolism. *Journal of Lipid Research* 54 2325–2340 (2013).
12. Morrison D. J. & Preston T. Formation of short chain fatty acids by the gut microbiota and their impact on human metabolism. *Gut Microbes* 7 189–200 (2016).
13. Venkatesh M, et al. Symbiotic Bacterial Metabolites Regulate Gastrointestinal Barrier Function via the Xenobiotic Sensor PXR and Toll-like Receptor 4. *Immunity* 41 296–310 (2014).
14. Honda K. & Littman D. R. The microbiota in adaptive immune homeostasis and disease. *Nature* 535 75–84 (2016).
15. Furusawa Y, et al. Commensal microbe-derived butyrate induces the differentiation of colonic regulatory T cells. *Nature* 504 446–450 (2013).
16. Arpaia N, et al. Metabolites produced by commensal bacteria promote peripheral regulatory T-cell generation. *Nature* 504 451 (2013).
17. Mukhopadhyal, & Louis P. Gut microbiota-derived short-chain fatty acids and their role in human health and disease. *Nat Rev Microbiol* 23 635–651 (2025).
18. Singh V, et al. Butyrate producers “The Sentinel of Gut”: Their intestinal significance with and beyond butyrate and prospective use as microbial therapeutics. *Front. Microbiol.* 13 (2023).
19. Ren T, et al. Indole Propionic Acid Regulates Gut Immunity: Mechanisms of Metabolite-Driven Immunomodulation and Barrier Integrity. *J Microbiol Biotechnol* 35 e2503045 (2025).
20. Cryan J. F, et al. The Microbiota-Gut-Brain Axis. *Physiological Reviews* 99 1877–2013 (2019).
21. Matsuura M. Structural Modifications of Bacterial Lipopolysaccharide that Facilitate Gram-Negative Bacteria Evasion of Host Innate Immunity. *Front. Immunol.* 4 (2013).
22. Zamyatina A, & Heine H. Lipopolysaccharide Recognition in the Crossroads of TLR4 and Caspase-4/11 Mediated Inflammatory Pathways. *Front. Immunol.* 11 (2020).
23. Zhu M, et al. C-reactive protein and cancer risk: a pan-cancer study. *BMC Med* 20 301 (2022).
24. Ridker P. M, et al. Relationship of C-reactive protein reduction to cardiovascular event reduction following treatment with canakinumab. *The Lancet* 391 319–328 (2018).
25. Pradhan A. D, Manson J. E, Rifai N, Buring J. E, & Ridker P. M. C-Reactive Protein, Interleukin 6 and Risk of Developing Type 2 Diabetes Mellitus. *JAMA* 286 327–334 (2001).
26. d’Hennezel E, Abubucker S, Murphy L. O, & Cullen T. W. Total Lipopolysaccharide from the Human Gut Microbiome Silences Toll-Like Receptor Signaling. *mSystems* 2 e00046–17 (2017).
27. Khorsand B, et al. Overrepresentation of Enterobacteriaceae and *Escherichia coli* is the major gut microbiome signature in Crohn’s disease and ulcerative colitis. *Front. Cell. Infect. Microbiol.* 12 (2022).

# Better Science.

---

# Better Insights.

---

# Better Health.

[Microba.com](https://Microba.com)

AUSTRALIA  
[1300 974 621](tel:1300974621)  
[hello@microba.com](mailto:hello@microba.com)

UNITED KINGDOM  
[+44 808 501 2748](tel:+448085012748)  
[hello.uk@microba.com](mailto:hello.uk@microba.com)

